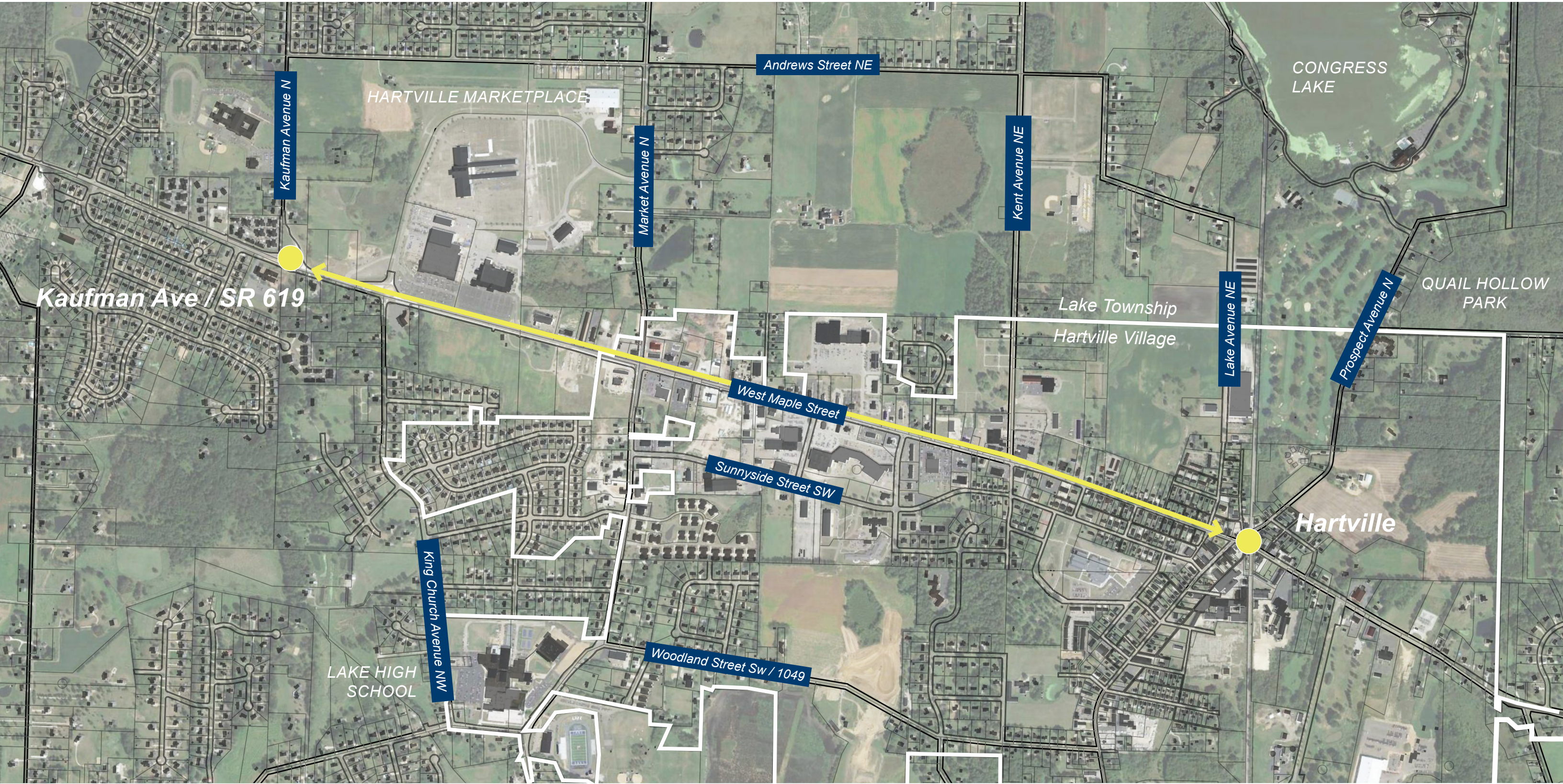




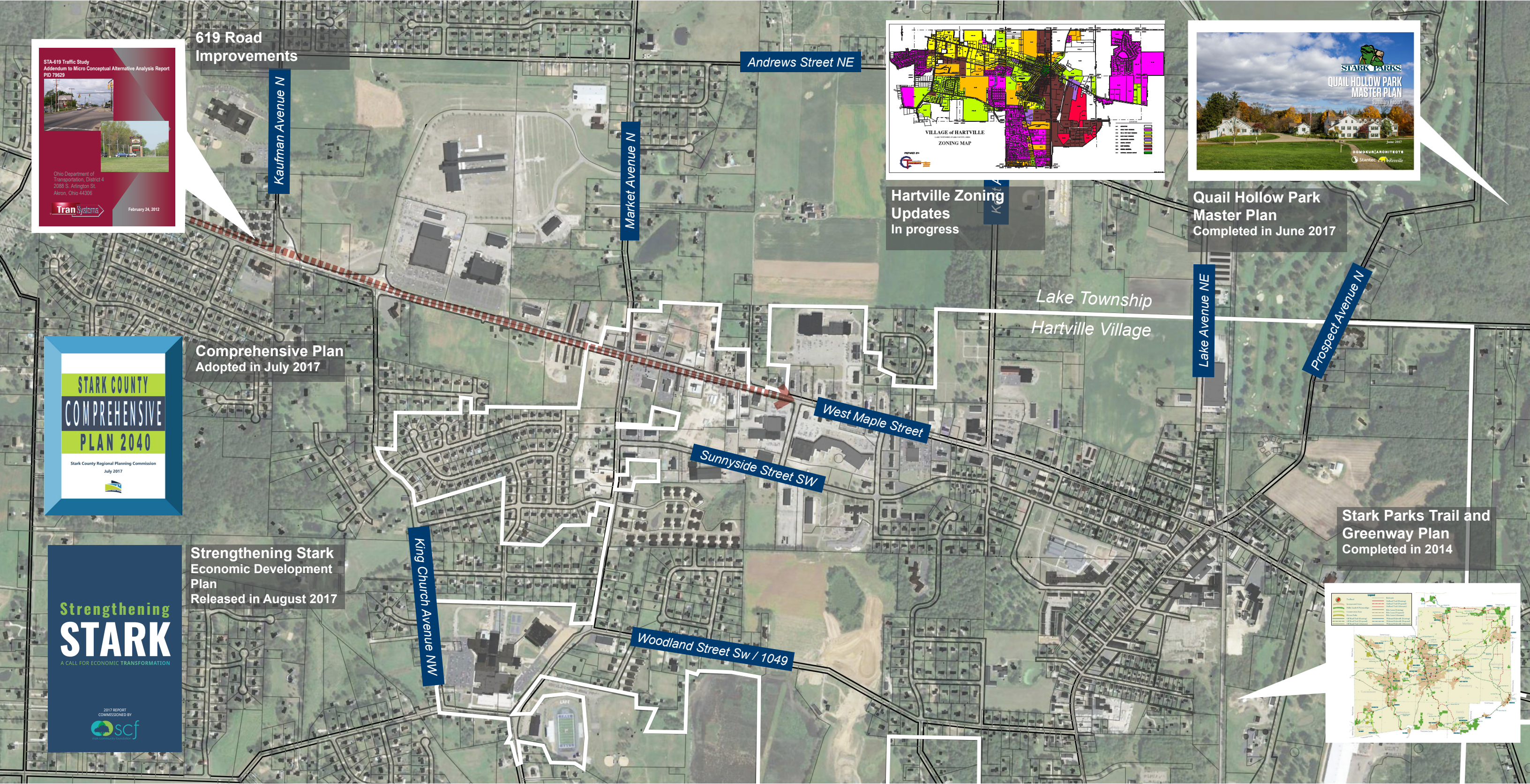
WEST MAPLE CORRIDOR

Our study area extends along West Maple Street
between Kaufman Avenue and historic Downtown Hartville



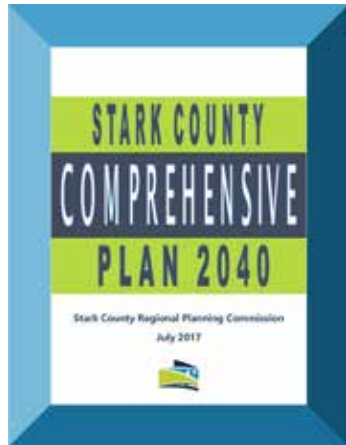
WHAT'S GOING ON

Relvant Studies and Initiatives Surrounding the Corridor



STARK COUNTY 2040

Adopted July 11, 2017

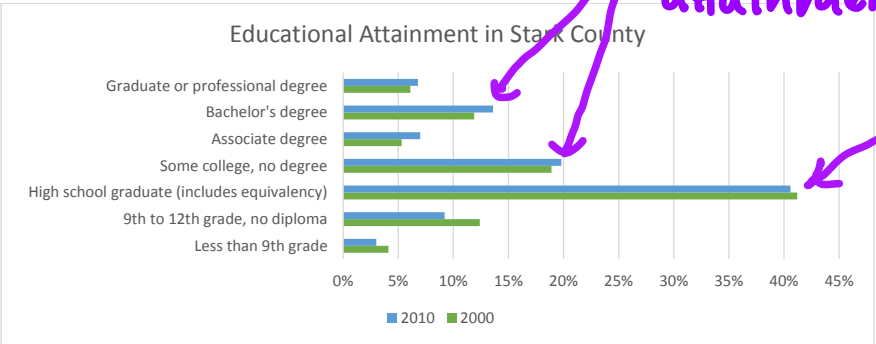


Economic

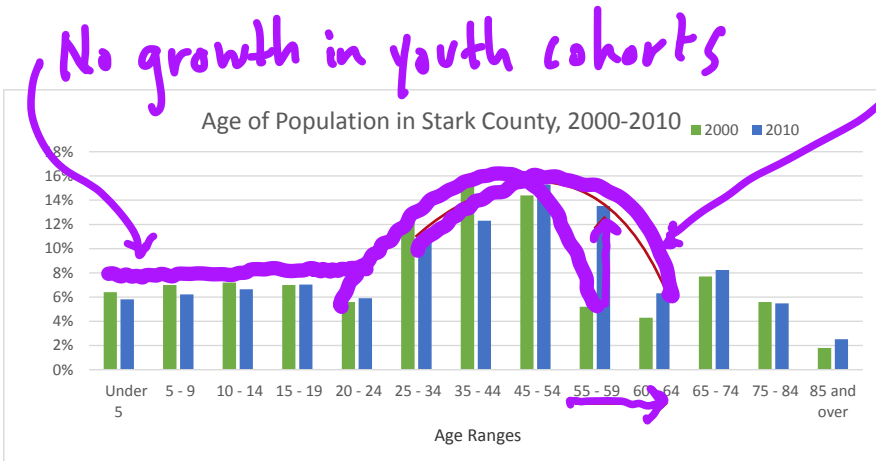
- Decline of manufacturing jobs
- Increase in professional, educational, health, and recreational related jobs
- Job Hubs along I-77 corridor

Social

- Population is aging
- People are leaving the county
- Lake Township has seen a population increase due to growth in suburbanization



Source: U.S. Census Bureau, 2000 SF-3 & 2010 ACS 5-Year Estimate
Figure 2.3, Educational Attainment in Stark County



Source: U.S. Census Bureau, 2000 SF-1 & 2010 SF-1
Figure 2.2, Age of Population in Stark County, 2000-2010

Growing Industries

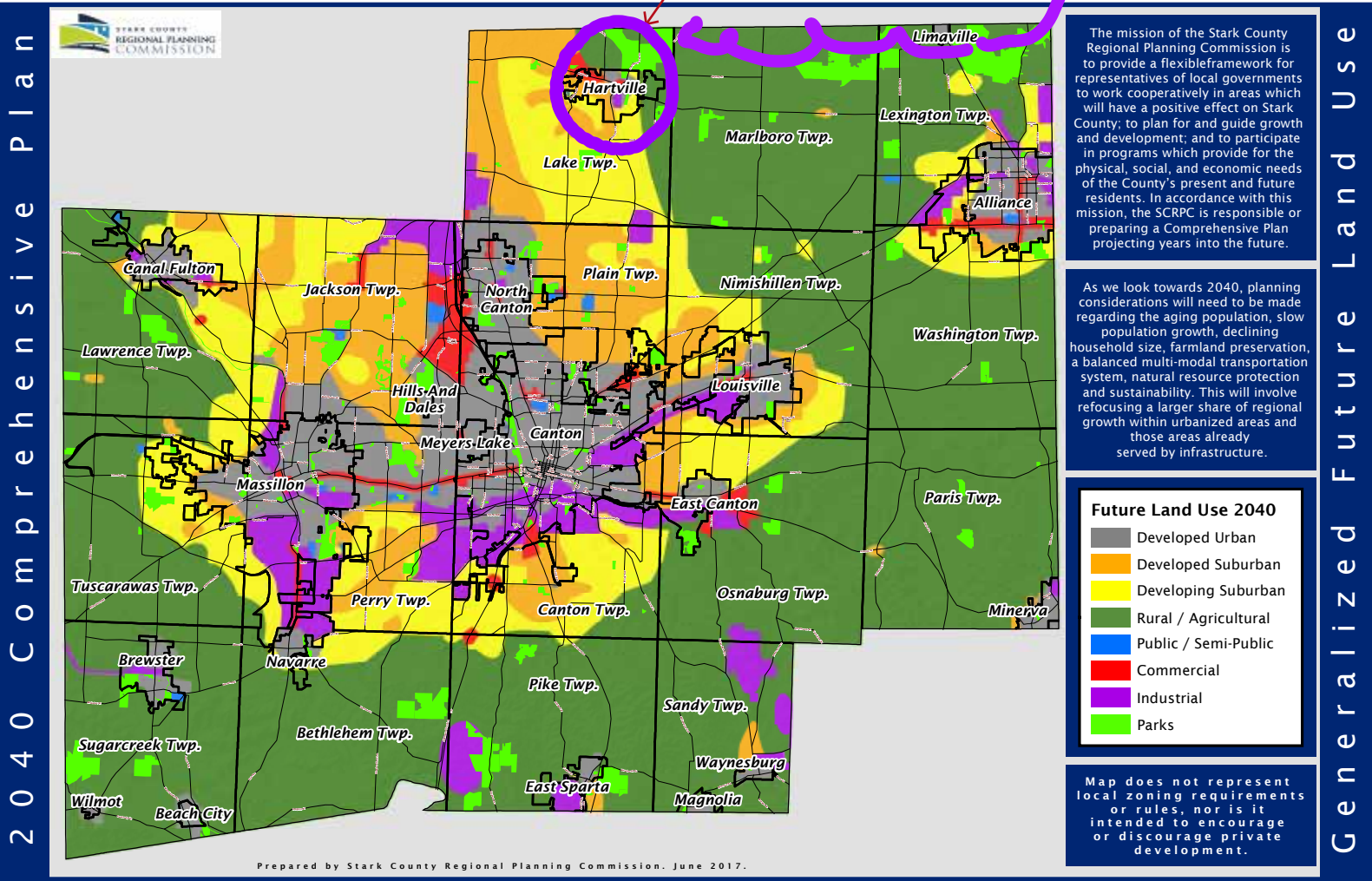
Physical

- Enhance liveability
- Preserve agricultural land
- Invest in a complete streets approach to mobility with an investment in pedestrian and bike infrastructure
- Preserve areas for outdoor recreation and enhance existing amenities
- Encourage mixed-use development

Industry	2000	2010	Percent Change
Agriculture, forestry, fishing and hunting, and mining	0.9%	0.7%	-19.6%
Construction	5.9%	5.6%	-5.1%
Manufacturing	23.5%	18.5%	-21.2%
Wholesale trade	3.8%	3.0%	-20.6%
Retail trade	12.6%	11.7%	-7.3%
Transportation and warehousing, and utilities	4.3%	4.7%	10.1%
Information	1.8%	1.8%	-0.9%
Finance, insurance, real estate, and rental and leasing	5.4%	5.0%	-6.8%
Professional, scientific, management, administrative, and waste management services	6.7%	8.4%	25.9%
Educational, health and social services	19.8%	24.1%	21.6%
Arts, entertainment, recreation, accommodation and food services	7.1%	8.9%	26.6%
Other services (except public administration)	5.2%	4.9%	-5.2%
Public administration	2.9%	2.5%	-14.3%

Figure 2.6, Stark County Employment by Industry
Source: U.S. Census Bureau, 2000 SF-3, 2010 ACS 5-Year Estimate

Convergence of developing suburban and Rural



STRENGTHENING STARK

Released in August 2017



Strengthening Stark

Commissioned and issued by Stark Community Foundation in 2017 at the request of the Stark Civic Group, **Strengthening Stark** is a **clear-eyed assessment** of the current **economic and social health** of Stark County. The report examines **key issues** that shape the county’s vibrancy. It recommends **specific actions** to help **reverse downward trends** and transform Stark into a **growing and more prosperous community**.

KEY FINDINGS



POPULATION

By 2040, Stark County’s **population** is expected to **drop to 355,500** – a **decline of 6%** since 2000.



JOB ACCESS

Nearly 40% of Stark County’s working residents **leave the county** to access their job.



EDUCATION

By 2020, **nearly two-thirds of all jobs** are projected to require a post-secondary credential or higher in the U.S., but presently **less than 30%** of Stark residents have at least an **associate’s degree**.



TRANSPORTATION

Stark residents **spend a higher percentage** of their income, **28%**, on transportation, than do residents of Northeast Ohio’s two other most populous counties, Cuyahoga and Summit.



BUSINESS

The **number of businesses** in Stark County **declined** from 6,997 in 2011 to 6,807 in 2015.



EMPLOYMENT

Employment in companies that are younger than five years old **fell 28.5%** between 2010 and 2015.

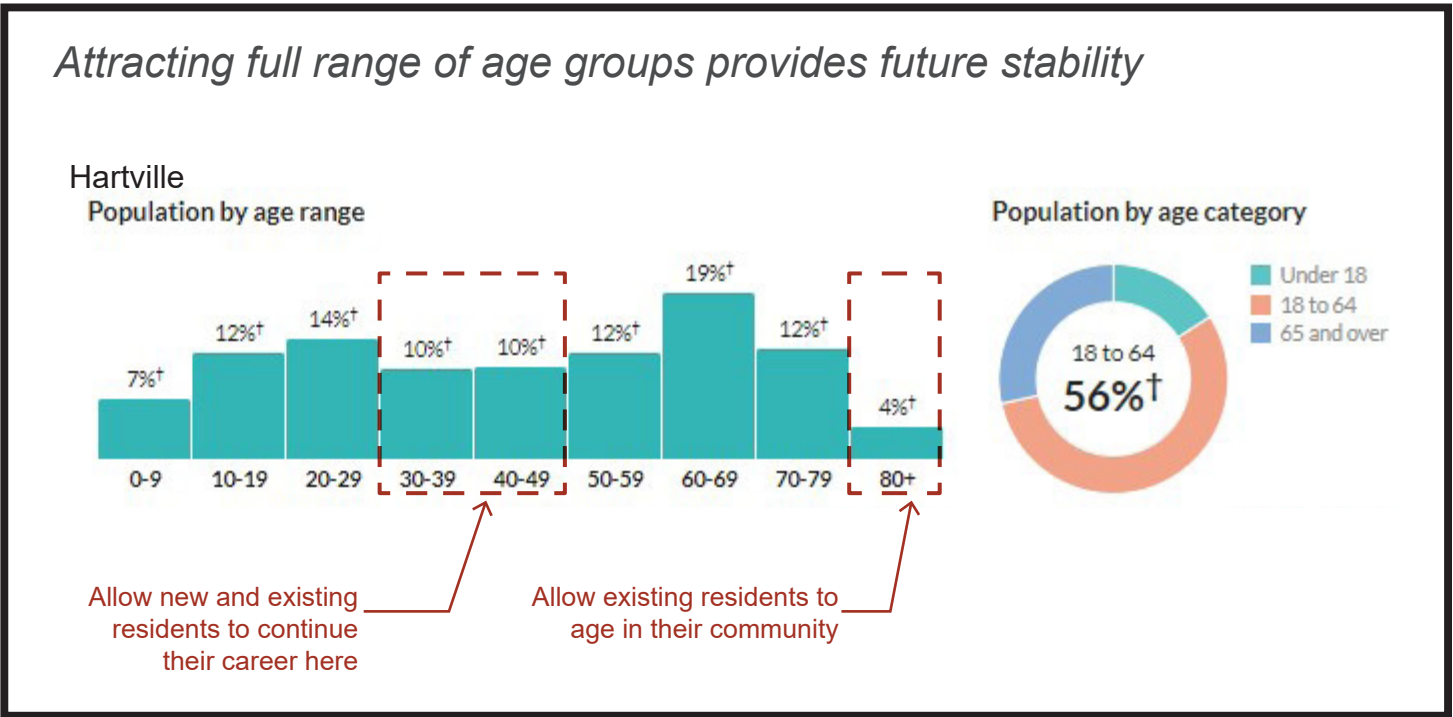
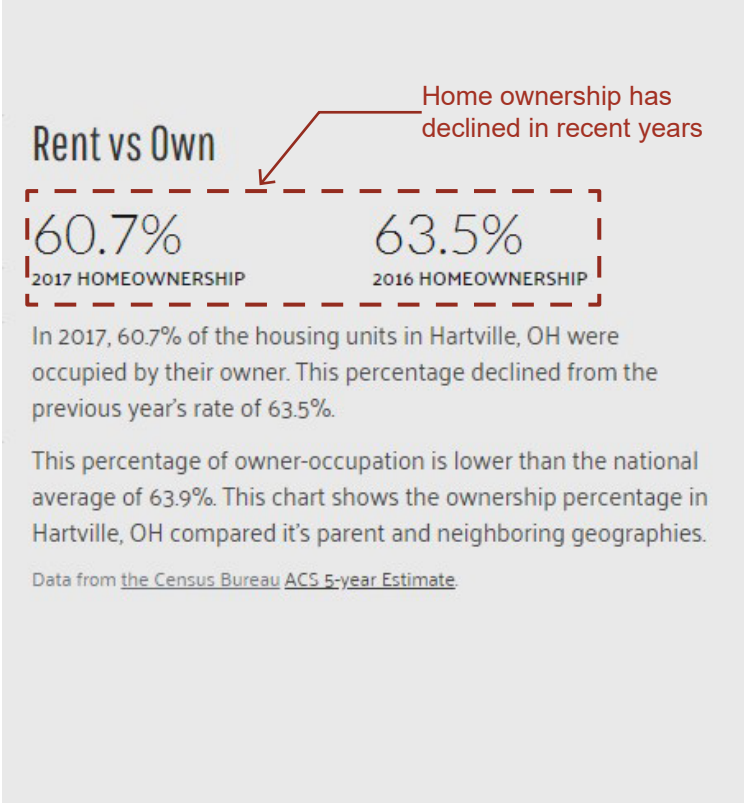
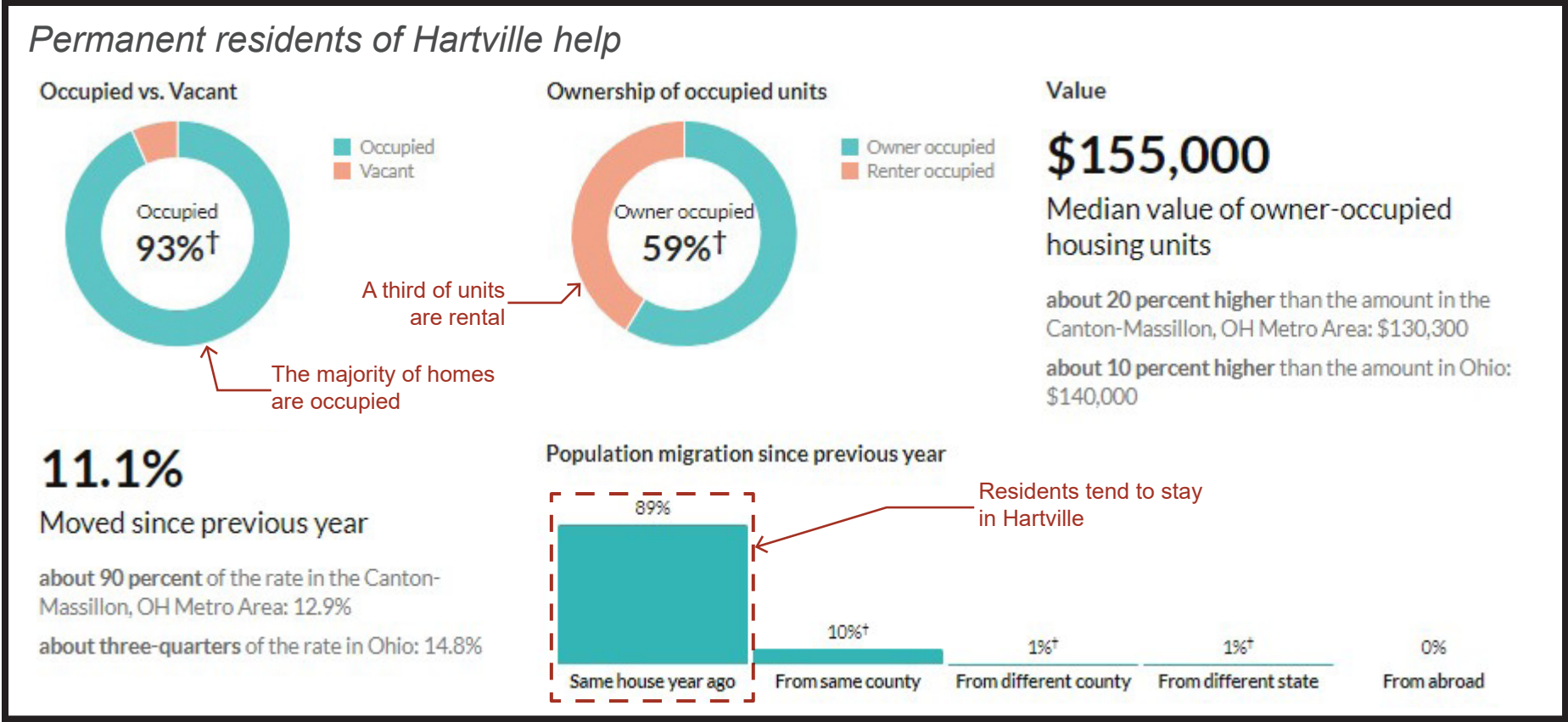
Without an **aggressive, new approach to economic development**, Stark County will continue to get **smaller, older and poorer**. Public officials, business owners, residents, students, nonprofits and foundations must **join forces** to make our community **stronger** and **better** for years to come.

To read the full report and learn how you can get involved, visit:

www.starkcf.org/strengtheningstark

LIVING NEAR THE WEST MAPLE CORRIDOR

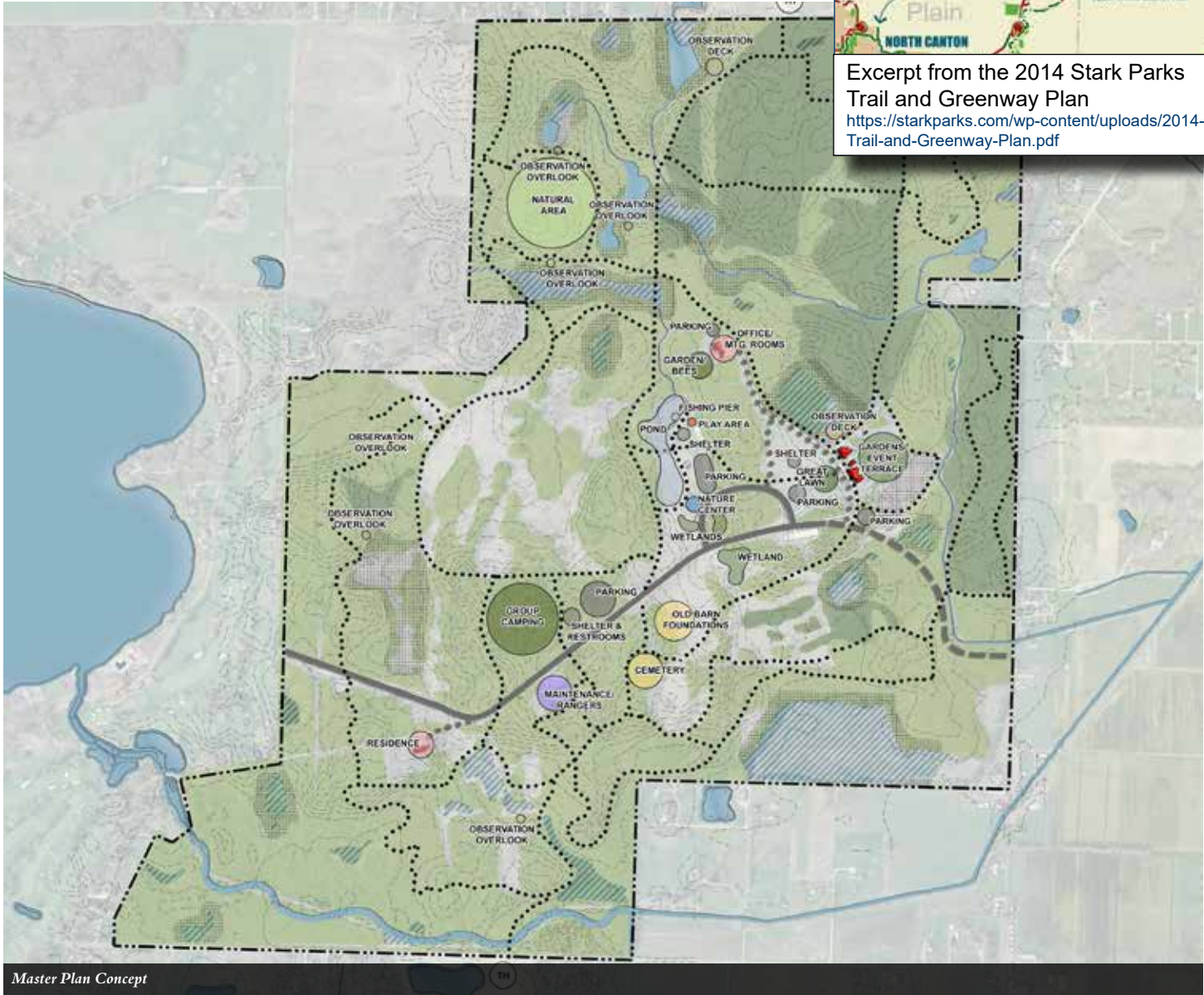
Understanding the residents, home ownership and home values in Hartville



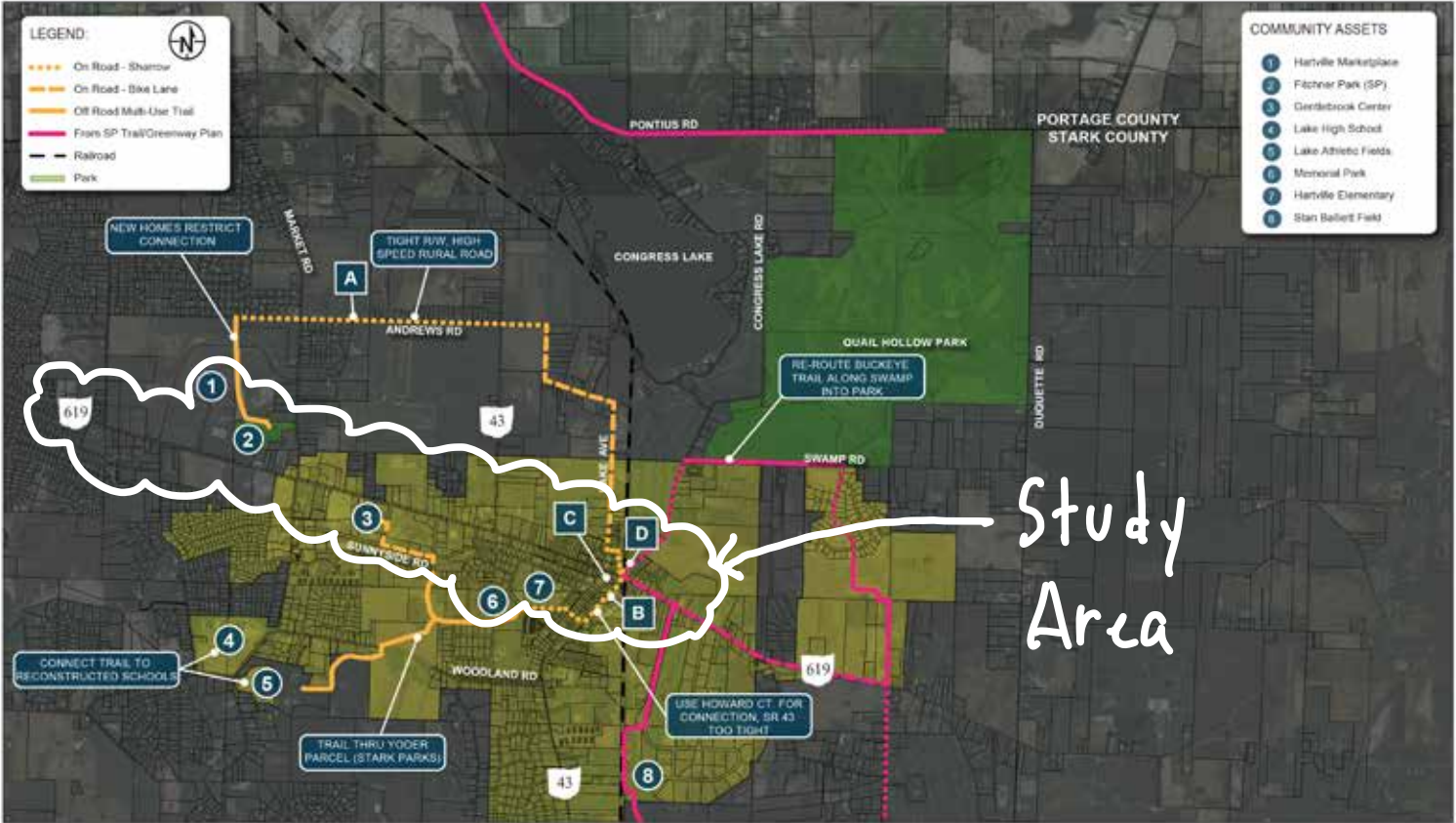
CONNECTING TO QUAIL HOLLOW

Master Plan Identifies Routes to Connect to West Maple

Quail Hollw Master Plan Prepared in 2017
Consultant Team: Domokur Architects, Stantec, and Reveille



COMMUNITY CONNECTIONS - ALTERNATIVE 1 - On Road Network



- On and Off Road Network

COMMUNITY CONNECTIONS - ALTERNATIVE 2




ROUTE 619 IMPROVEMENTS

STA-619 Traffic Study and Addendum to Micro Conceptual Alternative Analysis Report


Additional Considerations from Study:

- There are no bus stops along the corridor. Riders must wave down buses from the side of the road.
- There is a high frequency of curb cuts / access drives. Consider limits on left turns or a concrete median to prevent left turn movements.

STA-619 Traffic Study
Addendum to Micro Conceptual Alternative Analysis Report
PID 79629




Ohio Department of Transportation, District 4
2088 S. Arlington St.
Akron, Ohio 44306



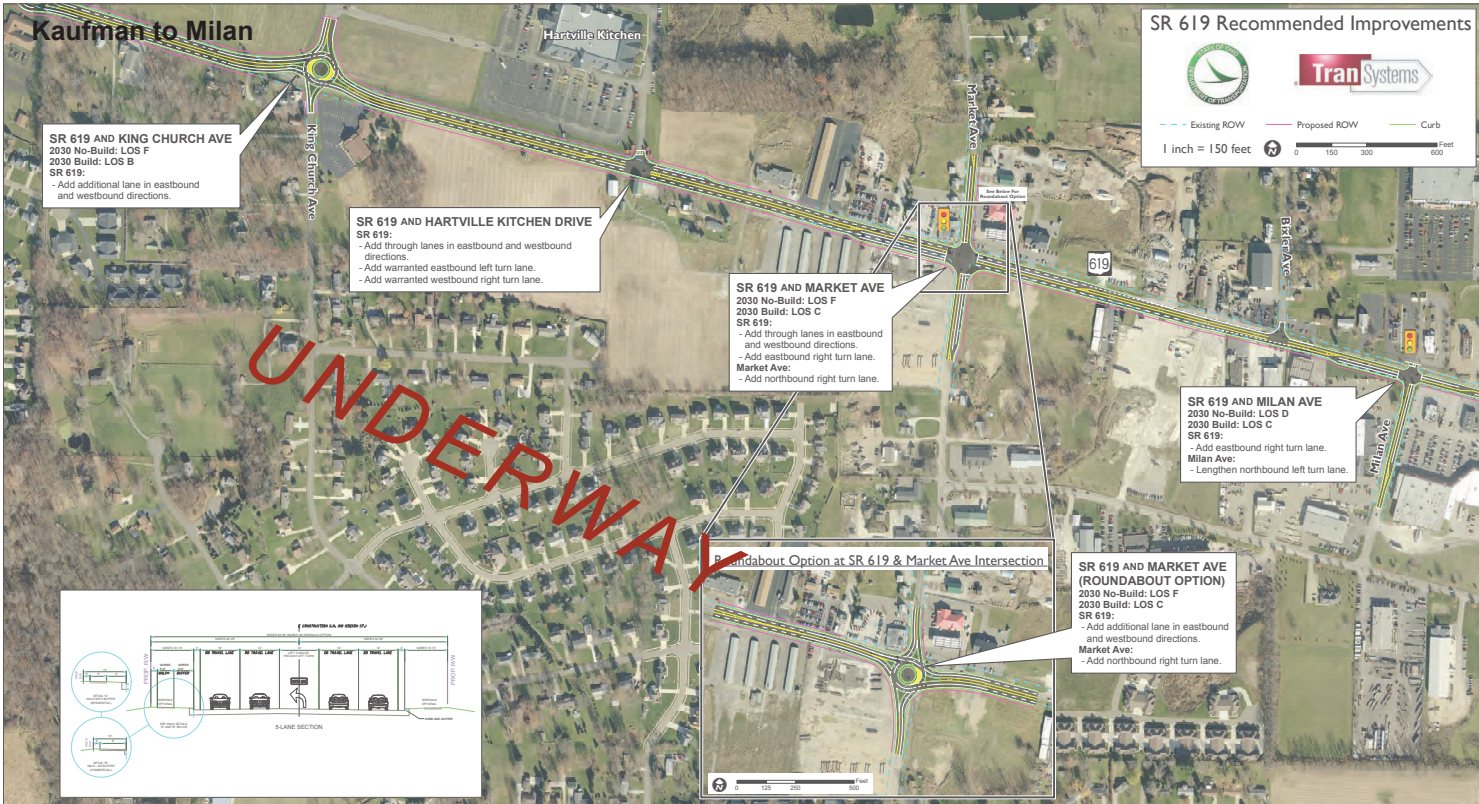
February 24, 2012

Hoover to Kaufman



City of Green Public Art at Roundabout


Kaufman to Milan



SR 619 Recommended Improvements

1 inch = 150 feet

Milan to Prospect



SR 619 Recommended Improvements

1 inch = 150 feet

August 2020 © Rothschild Doyno Collaborative

8

TELL US YOUR IDEAS!

We'd love to hear from you about what the future of the Corridor should be. Your participation will help make sure the plan reflects the needs and concerns of the Village of Hartville and Lake Township.

Please visit www.hlcd.org/engage or scan the QR code to share your thoughts via two short surveys. We want to hear from you!



Open your phone camera app and point towards the QR code. (You may need to move closer.) Your camera will recognize the code and show a notification for the project website. Tap the notification to open the website link.

Kaufman Ave / SR 619